

EDU Efficient Drilling Unit

Drilling Station

Dedicated machine for perimeter fastening drilling that fits into the workpiece processing stages on the dynamic table. It is a CNC system with a module that accommodates up to **3 drilling units** and operates on PVC profiles with the reinforcement already inserted.

It can possibly be used for transverse clamping drilling.

The machine defines a machining step **in line with** a GRAF Synergy **Cutting and Machining Centre**.

Presentation

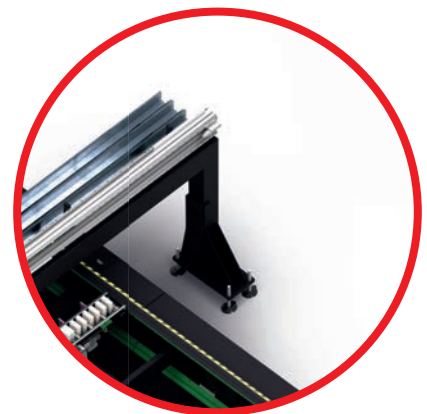
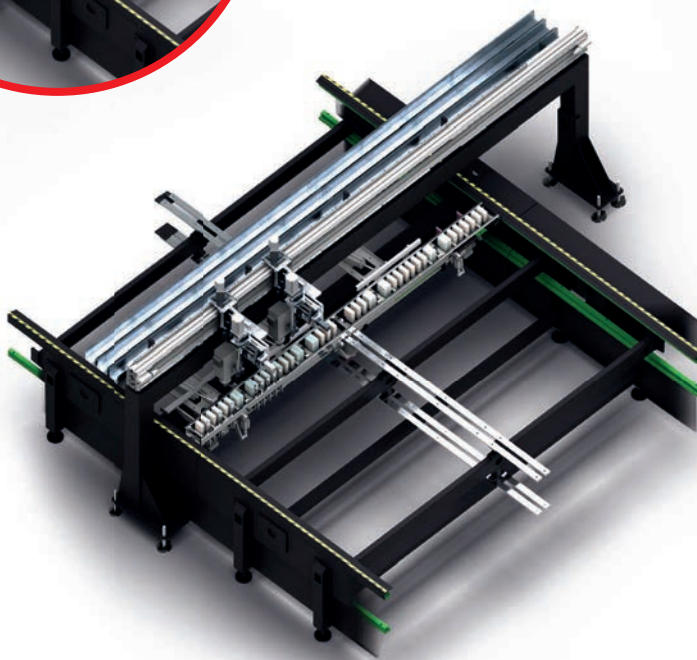
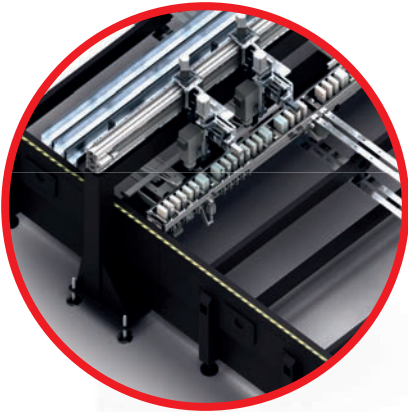
Speed and Labour Savings

The zero-time drilling process is performed directly during the profile workflow on the dynamic table. The operation is carried out automatically and is extremely precise and accurate.

5 reasons to choose EDU

Innovate and Automate

1. **Extreme speed of execution:** enables high levels of productivity.
2. **Extremely precise machining:** works on PVC profiles with the reinforcement already inserted.
3. **Control of all drilling parameters:** position, depth and feed speed.
4. **Flexibility in machining:** can be used for drilling cross-fixing.
5. **High level of automation:** reduces workload as no operator intervention is required.



Designed to ensure the best operation on the market, it is equipped with **several state-of-the-art solutions** to drill up to 3 holes simultaneously or alternately. **It optimises the activity** and speeds up the cycle time of each part.

The EDU is equipped with **modern software that manages the system**, allowing precise control of every drilling parameter such as position, depth, and feed speed.

Specifications

Dimensions

| | |
|--------|----------|
| Length | 4.500 mm |
| Width | 1.800 mm |
| Height | 2.700 mm |
| Weight | 2.500 Kg |

Details

| | |
|------------------------|------------|
| Power installed | 9 Kw |
| Power supply | 400 V |
| Air consumption | 200 Nl/min |
| Min. Exercise pressure | 7 bar |

Operational Characteristics

Work module

Structure

Carpentry bridge with up to 3 vertical drilling units.
Automatic software-controlled longitudinal movement in X axis.
Software-controlled automatic transverse positioning of drilling units on Y-axis.

Structure

Perimeter fixing hole.
(Possibility of crossbar fixing holes).

Technical Characteristics

Structure n. 0

Module of load and unloading

In combination with dynamic table.

Cutable Profile Dimensions

| | |
|--------|----------------|
| Length | 350 / 4.000 mm |
| Width | 40 / 130 mm |
| Height | 40 / 120 mm |